



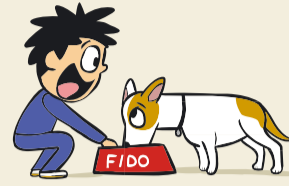
# How kids SHOULD NOT interact with dogs

It's common sense. Just imagine how people should interact with each other.

Avoid taking people's food.



Avoid bothering dogs when they are eating.



Avoid stealing other people's toys.



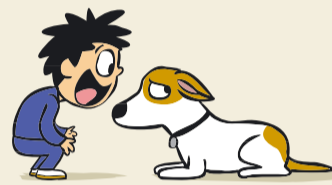
Avoid taking a dog's bones or toys.



Avoid putting your face right up to someone else's face.



Avoid putting your face right up to a dog's face.



Avoid bothering when asleep.



Avoid bothering animals when they are resting. Let sleeping dogs lie.



Avoid pestering.



Avoid grabbing tail/ears.



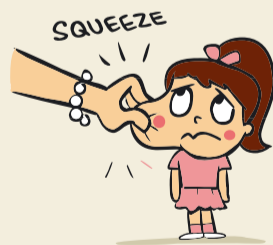
Avoid climbing on or trampling.



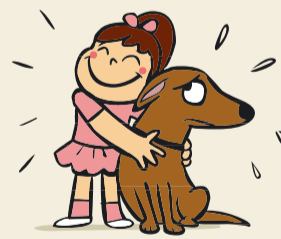
Avoid climbing on or trampling.



Avoid pinching.



Avoid hugging. Most dogs dislike it.



Avoid screaming around.



Avoid screaming and shouting. Use your 'inside' voice instead.



in partnership with Dr Sophia Yin, DVM MS  
[www.rspca.org.uk](http://www.rspca.org.uk) [www.drsophiayin.com](http://www.drsophiayin.com)

Royal Society for the Prevention of Cruelty to Animals  
Wilberforce Way, Southwater, Horsham, West Sussex RH13 9RS  
[www.rspca.org.uk](http://www.rspca.org.uk) [facebook.com/RSPCA](https://www.facebook.com/RSPCA) [twitter.com/RSPCA\\_official](https://twitter.com/RSPCA_official)

The RSPCA helps animals in England and Wales. Registered charity no. 219099. The RSPCA only exists with the support of public donations.